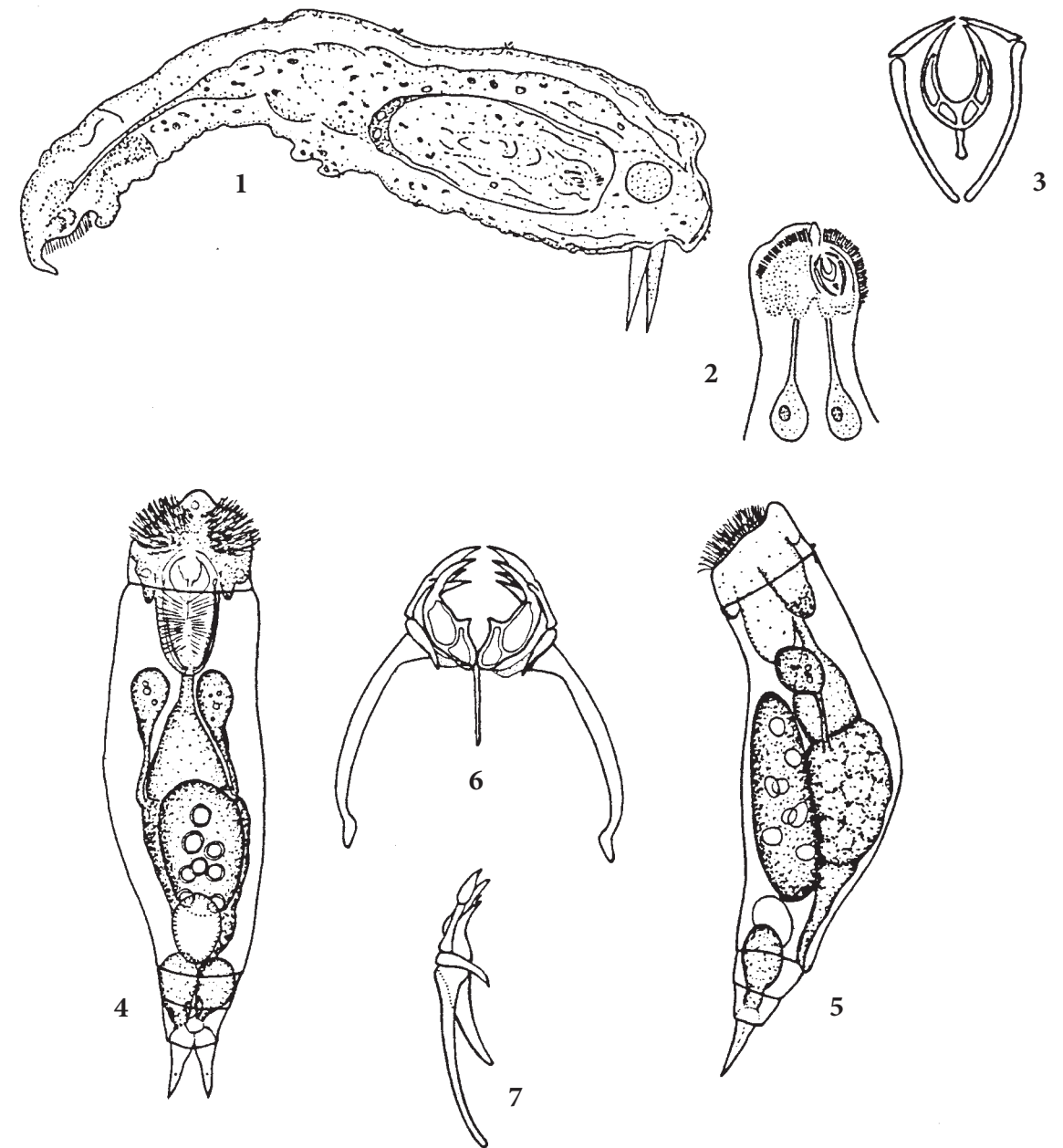


**Plate V**

**Figs. 1-6** *Synchaeta cecilia*: 1: whole animal, female with attached egg, dorsal. 2: male, lateral. 3: unci. 4: foot, lateral view. 5: toes. 6: foot.

**Figs. 7-11** *Synchaeta vorax*: 7: whole animal, dorsal view. 8: male, lateral view. 9-11: unci.

**Figs. 12-14** *Synchaeta baltica*: 12: whole animal, dorsal view. 13: corona, frontal view. 14: unci and rami (1, 12, 13 from Rousselet 1902; 2 from Remane 1929; 3, 5, 6 from Kutikova 1962; 4 from Koste 1981; 7 from Rousselet 1902; 8-11 from Kutikova 1974; 14 from Hollowday 2002).



**Plate VI**

**Figs. 1-3** *Paradicranophorus verae*: 1: whole animal, lateral view. 2: head. 3: trophi.

**Figs. 4-7** *Encentrum graingeri*: 4-5: whole animal, ventral and lateral views. 6-7: trophi, dorsal and lateral views. (1-3 from Bogoslovsky 1958, 4-7 from Chengalath 1985).