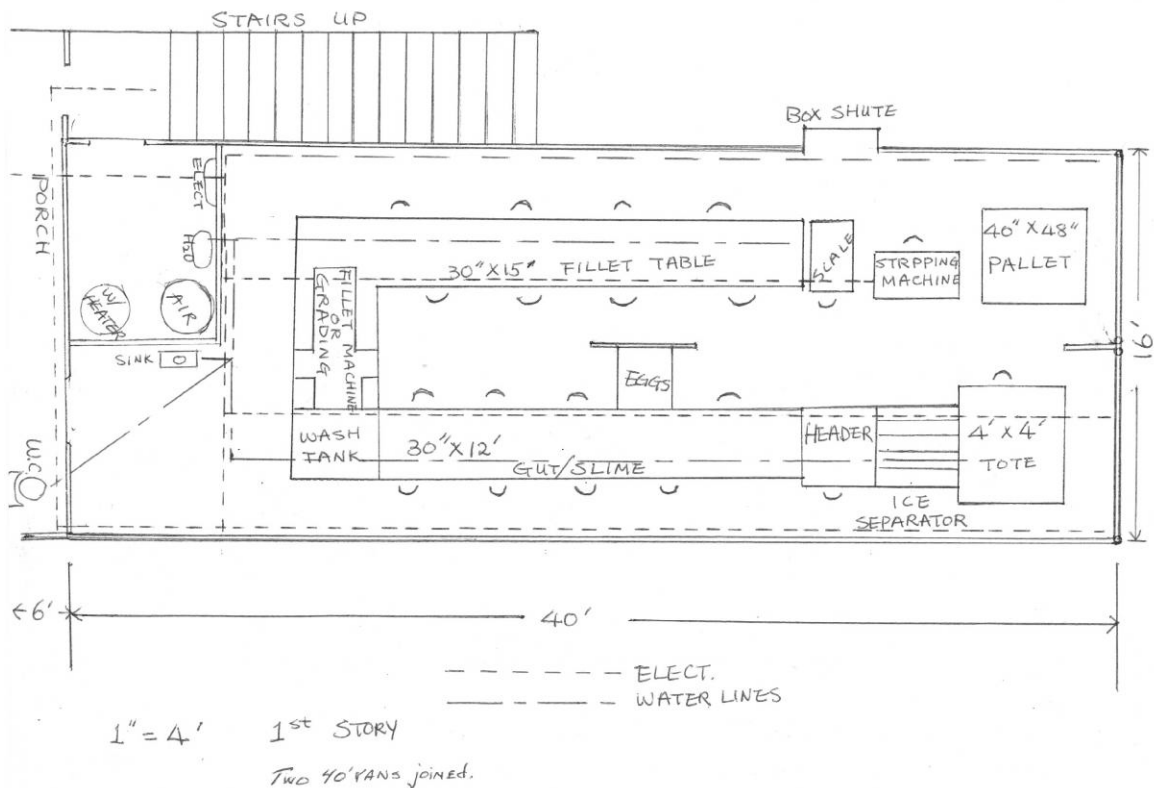


APPENDIX C. DESIGN FOR A PREFABRICATED PROCESSING PLANT

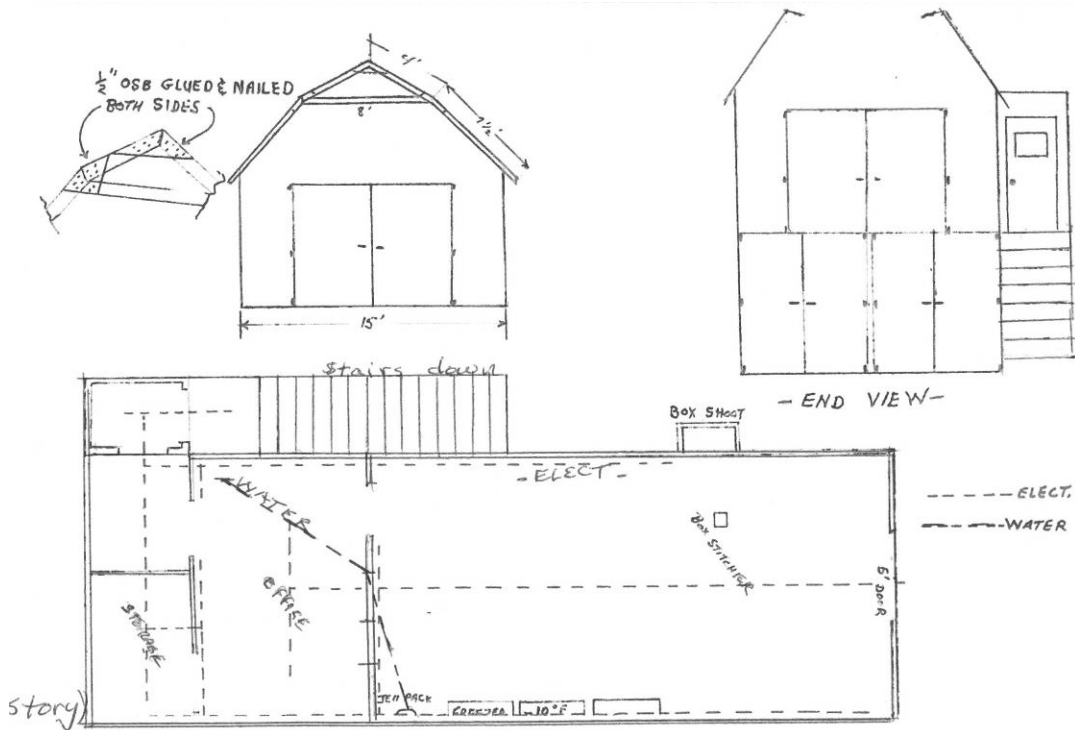
This is an example of a prefabricated fish processing plant building which can be shipped to a rural location with all equipment needed to be operational. The building is composed of two 40' vans. It includes trusses for creating a second story once the two vans are attached.

Salmon are brought into the first floor in totes and dumped onto the ice separator. It is then moved through the header, along the table or conveyor for gutting/slaming and into the wash tank. It then goes to a grading table, if H&G is the targeted product, or to an automatic fillet machine. As fillets exit the automatic machine, they are conveyed along the fillet table for additional processing (trimming or bone removal), placed in a box and onto the scale, and then strapped and placed on the pallet, and shrink wrapped for transport.



The eggs are removed during the gutting process, and taken to an egg processing room, if sujiko or ikura is to be manufactured (as illustrated in Appendix E).

The second floor (shown below) is for an office, storage, and making jell pacs. There is large open area for constructing boxes, where they are then dropped down the chute to the final packing area on the first floor.



The following two pages provide a comprehensive list of the equipment needed to operate the plant, all of which would be shipped with the plant. The approximate total cost of the vans and enclosed supplies is \$150,000.

This plant concept was designed by Doug Drum of Indian Valley Meats. He can be reached at 907-653-7511.

Comprehensive Equipment List for Prefabricated Processing Plant

PLANT		50 gal.	Clori Clean
		1	3-gal. Quat Sprayer
1	Table 30" x 15' Fillet	10 gal.	Quat
1	Table 30" x 12' H&G	100 ft.	Water Hose
1	Table 36" x 5'	3	Squeegees 36"
1	Wash Tank 36" x 36"	3	Push Brooms 24"
1	D-Icer 36" x 36"	2	Reg. Brooms
	First Aid Kits or Station Kit	6	30 gal. Trash Cans (plastic)
	Fire Extinguisher	6 cs.	Trash Liners
2	Freezer Van	12	Scrub Brush
2	Dickerson 7-Day Recorder & Chart	1	Mop Bucket
		12	Mop Heads
2	Toyo Stove	3	Mops
1	Header Machine		
1	Fillet Machine		
1	Waste Grinder with Pump		
1	Egg Table 2' x 30"	1	Electric Panel 200 amp
2	Digital Bench Scale	1	10' Grounding Rod with Wire & Acorn Nut
2	Digital Brailer Scale		
3	Tape Gun	10	20 amp Breaker
36	Rolls of 2" Clear Tape	7	15 amp Breaker
1	Strapper	2	220v 40 amp Breaker
6	Strap rolls	1	2" x 10' Conduit
1	Box Stitcher	1	2" LB 90 Degree Angle
1	Double Vacuum Sealer	1	200 amp Switch
1	Vacuum Seal Material	1	Meter Box
1	Gel Pack Machine	1	2" Weather Head
1	Gel Pack Materials	3	2" Conduit Clamp
2	Pallet Jack	1	Wire Puller
1	Cherry Picker	250 ft.	3/4" Conduit
1	Ice machine	100	3/4" Conduit Connector
6	Shovels	50	3/4" Conduit Cuplors
3	Freezer 8'	500 ft. ea.	Red, White, Black, Blue 12/2 THHN
1	Air Compressor		
1	Chlorinator	500 ft.	12/2 Electrical Wire
1	Chemical Foamer	50 ft.	3/6 Electrical Wire
	Shrink Wrap	300 ea.	Wire Nuts (yellow, red, blue)
	Toes with Lids	300	Romex Wire Staples
	Insulated Totes	50	Single Gang Metal Box
10	50" Luger	4	Double Gang Metal Box
12	Roe Knife	4	Security Sensor Street Light
12	Steel	4	75 watt Street Light
12	Scabbers	1	200 amp Panel
100	Aprons	35	Recepticals
36	Hard Hats	6	GFCI Receptical
25	Rubber Floor Mats	24	Single Pole Switch/Cover
500	Hair Nets	48	Single Gang Box
24	Wire Gloves	8	Double Gang Box
144	Cotton Gloves	8	4-Gang Box
2 doz.	Heavy Duty Rubber Gloves (clean-up)	25	Light Box
		12	Water Tight Cover Light (plant)
2	Boot Dip Boxes		
	Boot Dip Chemical	6	Cover Light (loft)

ELECTRICAL

